



CARTONERS

EXPERTS FOR DIVERSE PRODUCTS
IN CARTONS.

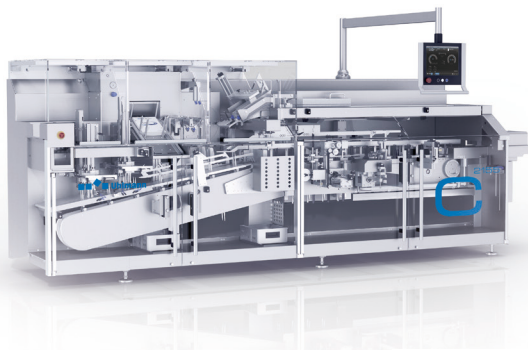
CARTONERS

EXPERTS FOR DIVERSE PRODUCTS IN CARTONS

Uhlmann cartoners excel in terms of cost-efficiency, precision, and process reliability, and this proficiency is not restricted to packaging blisters in cartons. They are equally competent in handling bottles, pens, or pillow packs with product-related utensils, all types of leaflets, and cartons of critical quality at a consistently high output. Intermittent or continuous motion cartoners are available depending on your requirements.

These can be integrated into a line or used as standalone machines. Standard types of closure are possible with each of our cartoners: these include tuck-in and hot-melt closure, the use of a fourth flap, side loading with top opening, as well as tamper-evident options. All cartoners can be fitted with marking systems or Track & Trace functions, and can be linked to appropriate labeling systems.

PRACTICE-ORIENTED AND PRODUCTIVE

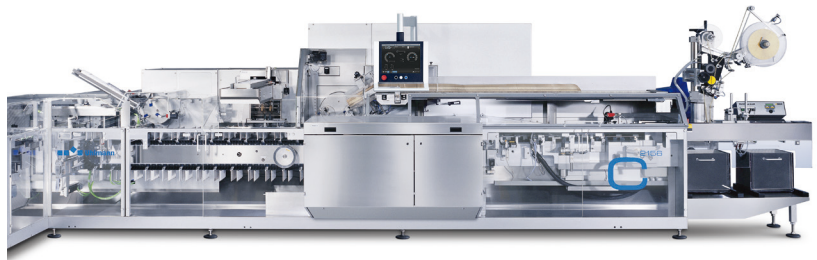


C 2155

An intermittent motion cartoner. Easy to operate and suitable for small to medium batches of a wide range of solid and liquid dose products: bottles, vials, wallets, small plastic containers, ampoules, syringe blisters, inhalers, pillow packs, and medical devices.

C 2156/C 2206

Two continuous motion, 6"-pitch cartoners for the highly flexible packaging of a wide range of products in small and medium batches. Both models are suitable for all carton qualities.



C 2305/C 2504

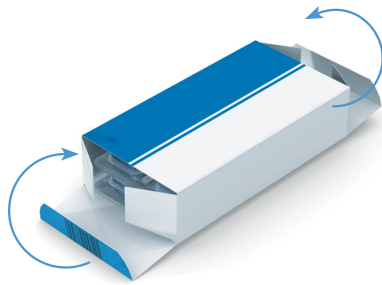
Continuous motion cartoners offering a consistently high output of 300 and 500 cartons per minute respectively. Ideal for large batches. Easy to operate. Changeovers to a new format take a maximum of 15 minutes.



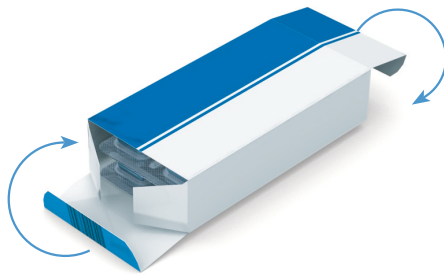
TECHNICAL DATA CARTONERS

Cartoner	Max. output cartons/min.	Operating mode	Max. carton size [A x B x H]	Pitch	Max. blister stack height
C 2155	150	intermittent	115 x 100 x 170 mm	140 mm	85 mm
C 2156	150	continuous	130 x 100 x 250 mm	6"	95 mm
C 2206	200	continuous	130 x 100 x 200 mm	6"	95 mm
C 2305	300	continuous	105 x 105 x 155 mm	5"	100 mm
C 2504	500	continuous	80 x 90 x 155 mm	4"	85 mm

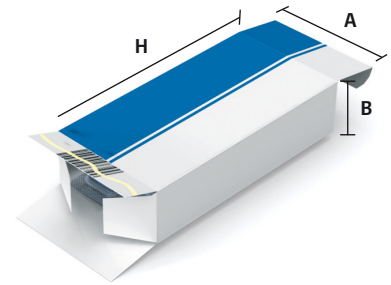
ALL OPTIONS: TYPES OF CLOSURE



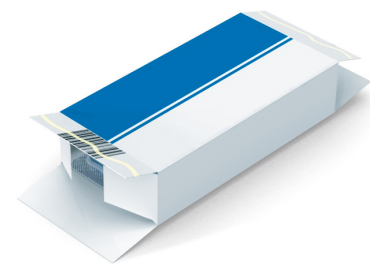
1 Tuck-in closure with airplane flaps



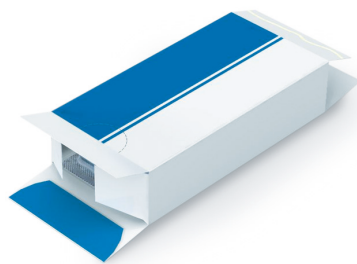
2 Tuck-in closure with reversed flaps



3 Combination tuck-in and hot-melt closure



4 Double-sided hot-melt closure



5 Hot-melt closure with fourth flap – reclosable

09/2017 | We reserve the right to make alterations in line with technical development.

THE **HEARTBEAT** OF PHARMA PACKAGING

**Uhlmann Pac-Systeme
GmbH & Co. KG**
Uhlmannstrasse 14-18
88471 Laupheim
Germany
Phone +49 7392 702-0
info@uhlmann.de

To find your personal contact person
and our locations worldwide please
visit www.uhlmann.de



A member of
Excellence United